

GATEWAY AT PEERLESS



NOW LEASING!

AFFORDABLE AND SPACIOUS 1, 2 & 3 BEDROOM APARTMENTS & TOWNHOMES

Gateway at Peerless is the newest 62-unit mixed-income multifamily development in Prince George's County located along U.S. Route 301, just minutes away from the heart of the Town Center of Upper Marlboro. Our 1-, 2- and 3-bedroom apartments and townhomes will boast spacious- open floor plans in both our midrise and townhomes buildings. Each apartment and townhome will have modern finishes, washer and dryer hookups, private patios and balconies, luxury vinyl plank flooring, and Energy Star appliances. The community will also feature a beautiful great room, fitness center, computer nook, and covered garage parking.

Conifer Realty is proud to have partnered with the Episcopal Housing Corporation, a Maryland non-profit organization whose mission is to promote the creation of affordable housing to help families most in need.

**COMPLETE OUR ONLINE INTEREST LIST FORM ON OUR WEBSITE,
WWW.GATEWAYATPEERLESS.COM**

RENT INFORMATION*

1 Br. 1 Ba. \$678-\$1,600 **660 sq. ft.**

2 Br. 1 Ba. \$826-\$1,950 **1,214 sq. ft.**

3 Br. 1.5 Ba. \$955-\$2,450 **1,323 sq. ft.**

*Income and Occupancy restrictions apply for all apartment homes
** Please call for current rental rates. A variety of affordability programming is offered.

LEASING INFORMATION

Please **DO NOT** go to the construction site on Peerless Avenue.

There is no one there to assist at this time

During construction, our interim leasing office address is

Gateway at Peerless
C/O Marwood Senior Apartments
5605 Marwood Blvd. Upper Marlboro, MD 20772

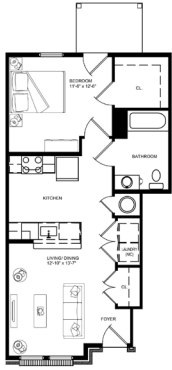
Please call in advance. No walk ins are currently being accepted

15510 Peerless Avenue, Upper Marlboro MD 20772

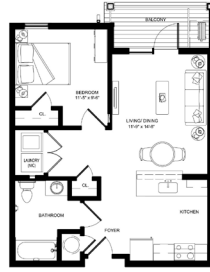
[E] gatewayatpeerless@coniferllc.com

[P] (301) 291-7020 **[TTY]** (800) 735-2258

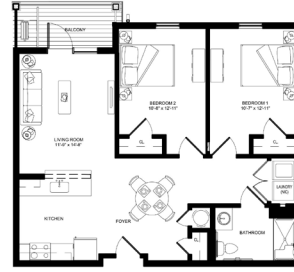
TYPICAL 1 BEDROOM APT.



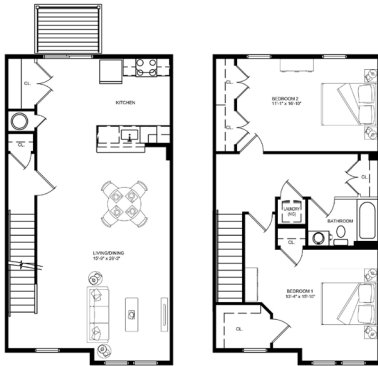
TYPICAL 1 BEDROOM APT.



TYPICAL 2 BEDROOM APT.



TYPICAL 2 BEDROOM TOWNHOME



TYPICAL 3 BEDROOM TOWNHOME



- Fully equipped kitchens w/Energy Star rated appliances & fixtures
- Spacious floor plans
- Elevator
- Central air
- Great Room
- Washer & Dryer hook ups
- Smart card laundry center
- Fitness room
- Controlled building access
- Small pets welcome restrictions apply
- Ample parking
- Smoke-free community
- Handicap accessible



Additional floor plans may be available.
Security deposit required. Income restrictions apply.